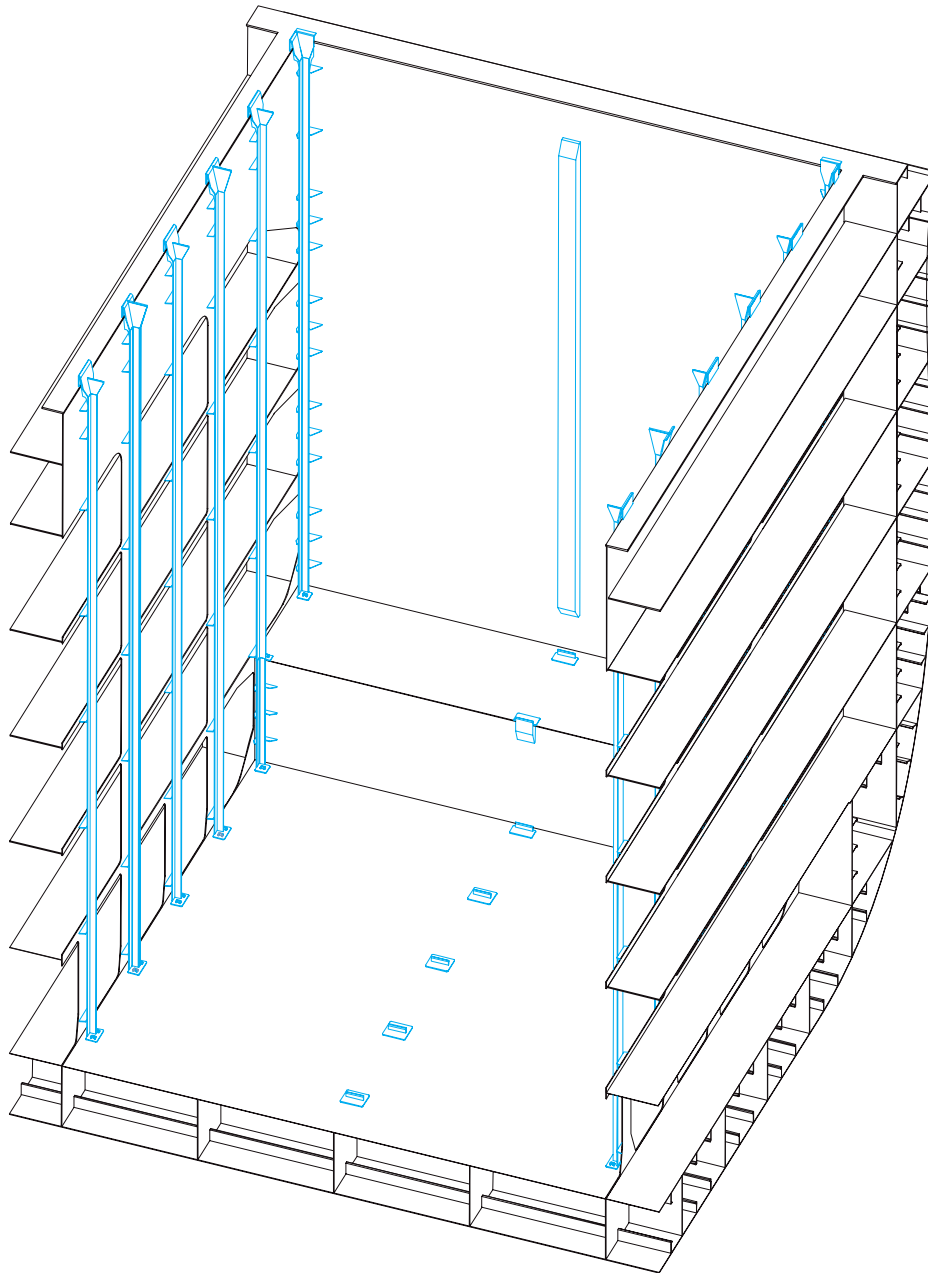


CELLGUIDES



Description

The installation of fixed 40' cellguides is a standard solution for ships which are exclusively designed to carry containers. Vertical guide angles are attached to the transversal bulkheads with entry guide angles at the upper end in alternating high peak / low peak arrangement to speed up loading time. No loose securing fittings are needed for securing of 40' containers and various securing solutions can be applied when loading two 20' containers in a 40' cell depending on customer's preference concerning stackload versus OSHA requirements.