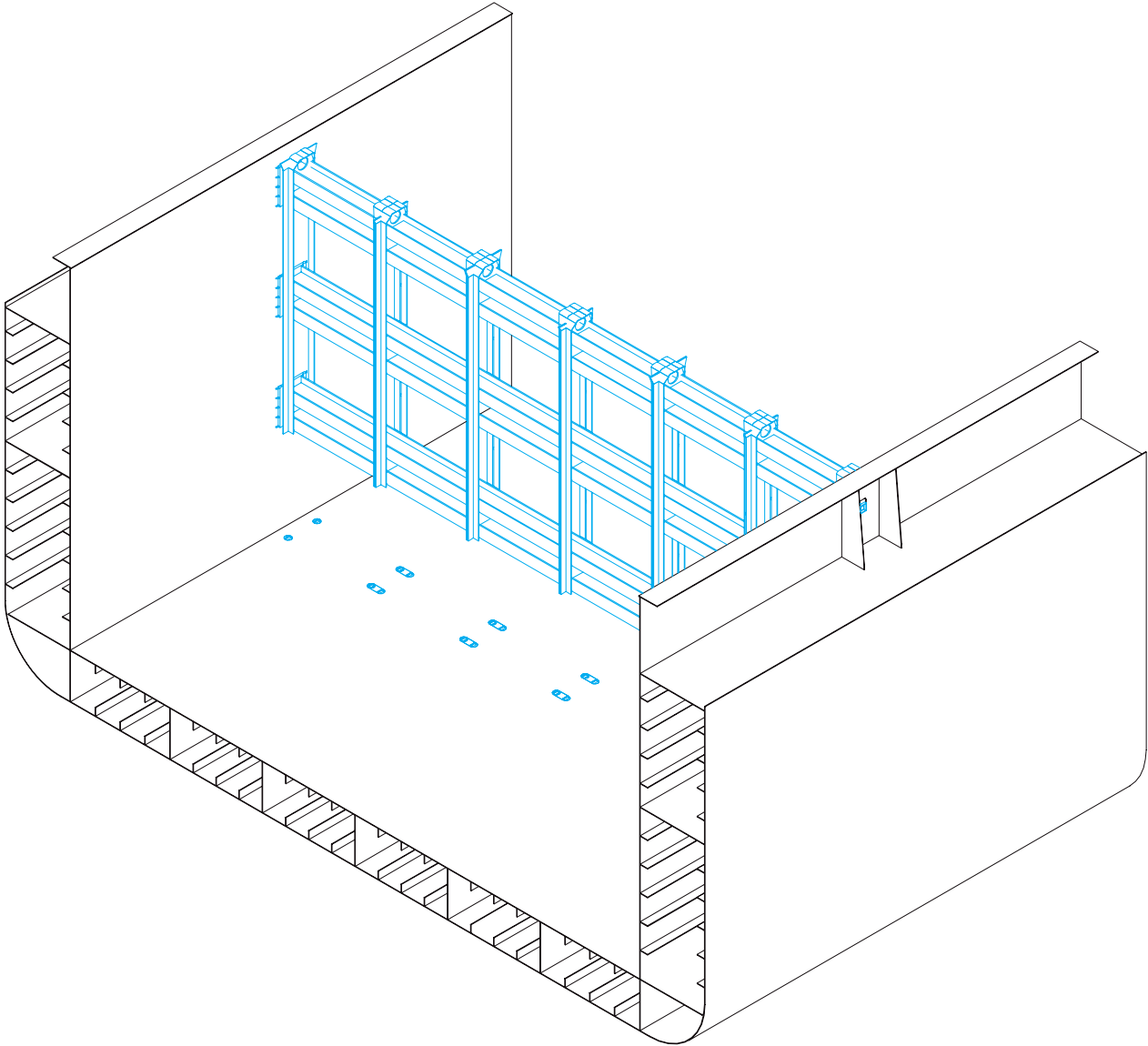


REMOVABLE CELLGUIDES SYSTEMS

**Description**

In case of multi purpose container vessels the loading of other cargoes than containers is disturbed when fixed cellguides are installed. When making the cellguides removable the cargo holds can be used more flexible for other cargoes when parking the cellwall close to the bulkhead. Alternatively the cellguides can be shifted in longitudinal direction to facilitate loading of different container sizes, i. e. 20', 30', 40' or 45'. The cellwall is fully self-sustained with counter bearings at

the longitudinal bulkhead. The application of removable cellwalls is limited to a maximum hold breadth of approx. 7 to 8 containers across otherwise the steel weight of the cellwall might exceed the lifting capacity of ship cranes. As an option the removable cellwall can be designed as grain bulkhead.