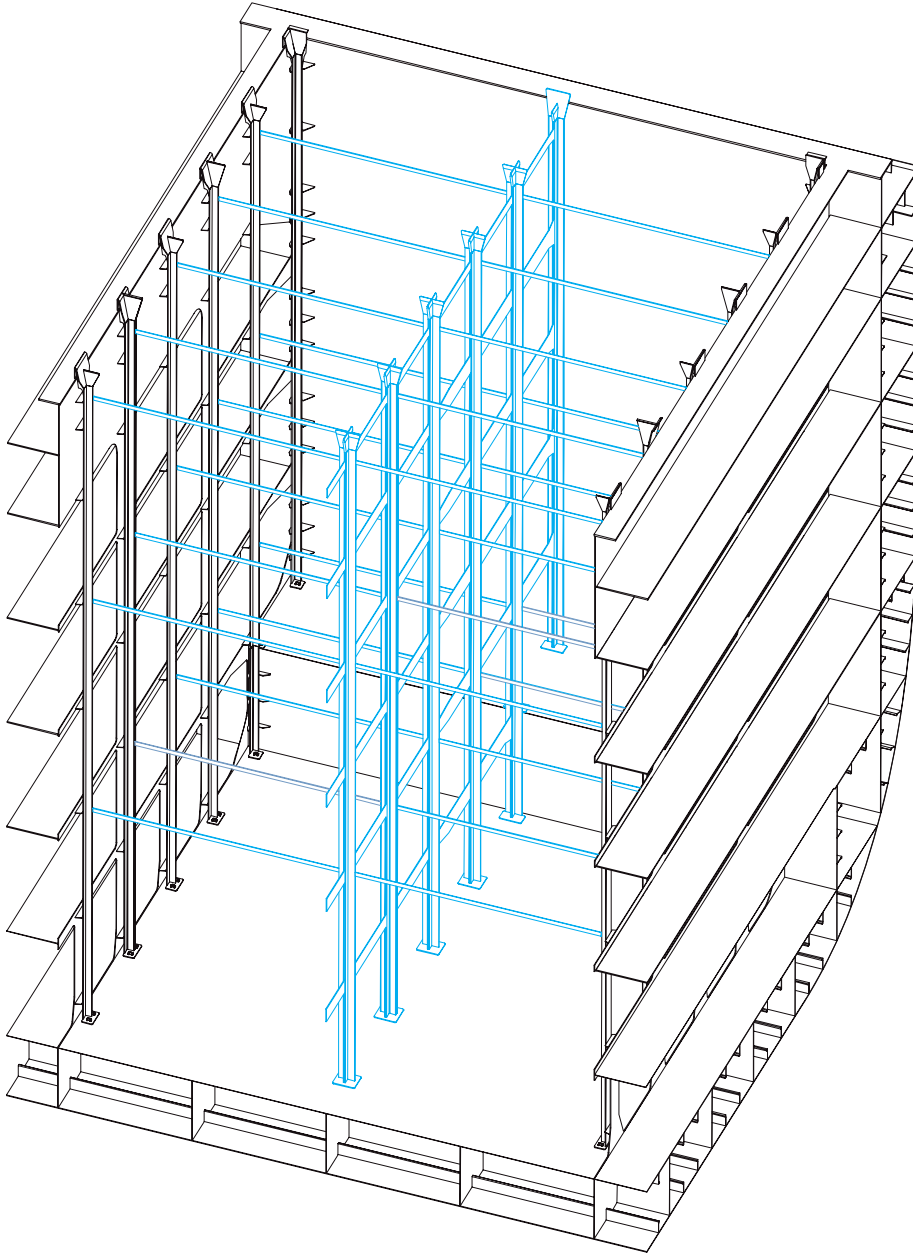


## SLIM CELLGUIDES

**Description**

Container vessels which frequently have to carry a large amount of heavily loaded 20' containers sometimes are equipped with slim cellguides which are fitted into the 76 mm ISO gap of a 40' cellguide system. Slim cellguides are fixed in longitudinal and transversal direction to transmit forces from container loading into the hull structure. No loose securing fittings are needed at all therefore this system fully complies to OSHA regulations but still allows

unrestricted stackloads. No need to mention that exclusively 20' containers can be loaded when slim cellguides are installed. Due to its extreme narrow design slim cellguides are so weak that they normally cannot be made removable.