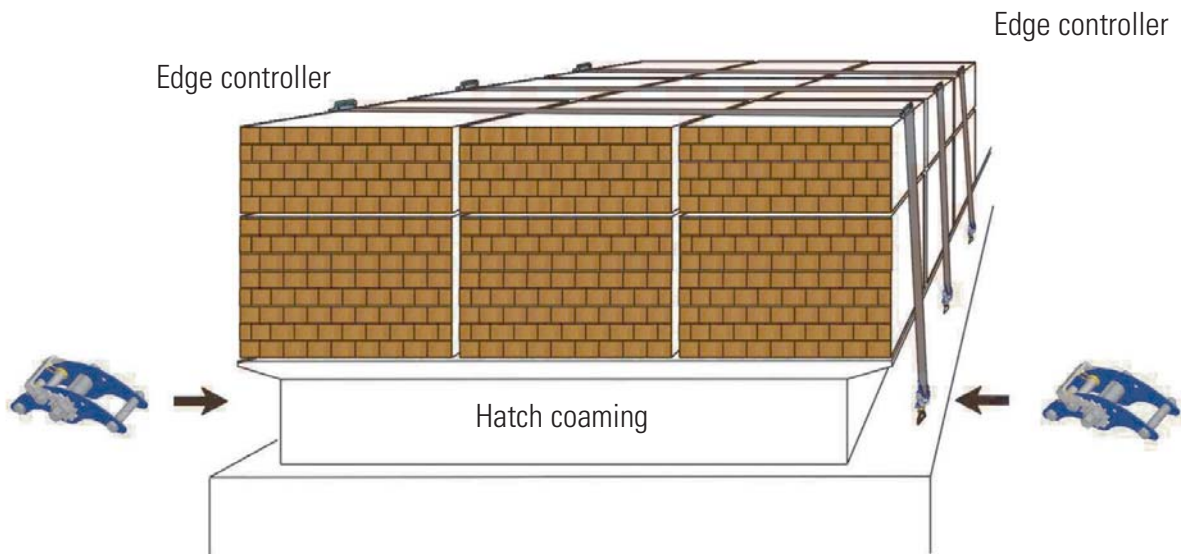


MASTER LASHING (DOUBLE WINCH SYSTEM)

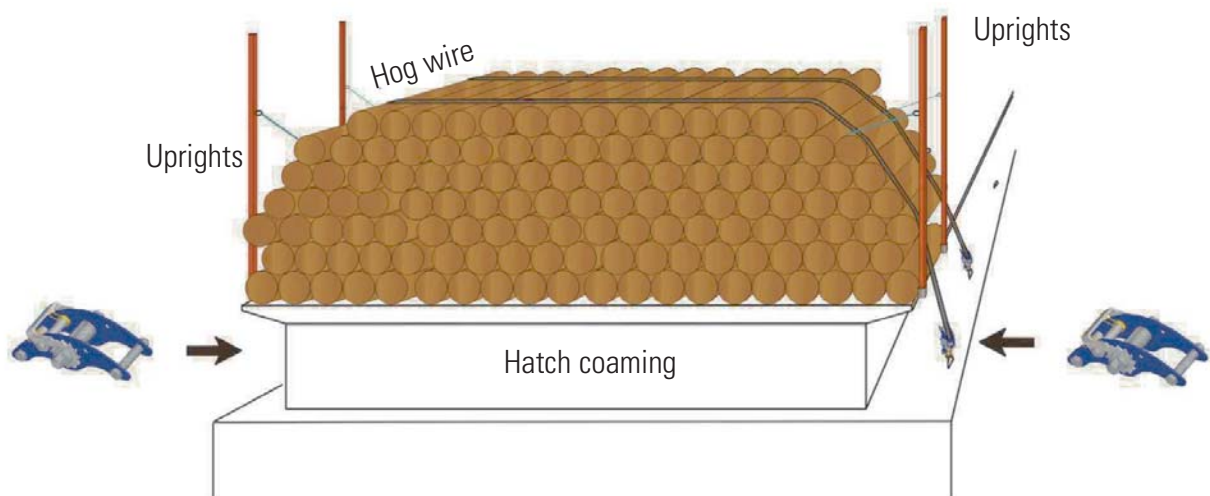
Professional securing system for timber deck cargoes

(in compliance with IMO 275E "Code of Safe Practice for Ships Carrying Timber Deck Cargoes")

Lashing arrangement for unitized/packaged timber



Lashing arrangement for logs



MASTER LASHING (DOUBLE WINCH SYSTEM)

Master Lashing

ML-2/100/13.3

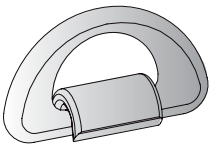
Double winch arrangement

Components of each system

- 2 x Ratchet Winch with 1 steel adapter each
- 1 x Web band 100 % PES, loose end, variable length
- 2 x Edge controller (web band protector) – Option

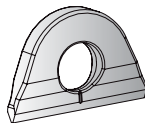
Fixed fittings

DR-50



see chapter 3.13

LAP-1



see chapter 3.9



Benefits

- Safe and economical
- Easy access to tightening devices (ratchet winch)
- No additional personnel protection + safety devices needed
- Maximum performance due to variable belt lengths
- Good flexibility to be adjusted to any lashing point arrangement and / or cargo dimension

Specification

- Min. breaking load tension 13300 daN
- Extremely high tensile band webbing (100 % Polyester)
- Gasoline-, lubricant- and solvent-proof
- High quality steel ratchet winch, galvanization of all parts
- Safe-release feature (stand-off operation)