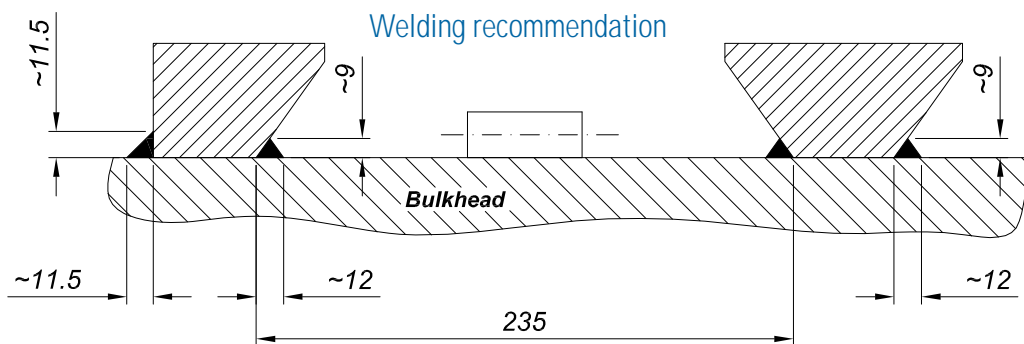
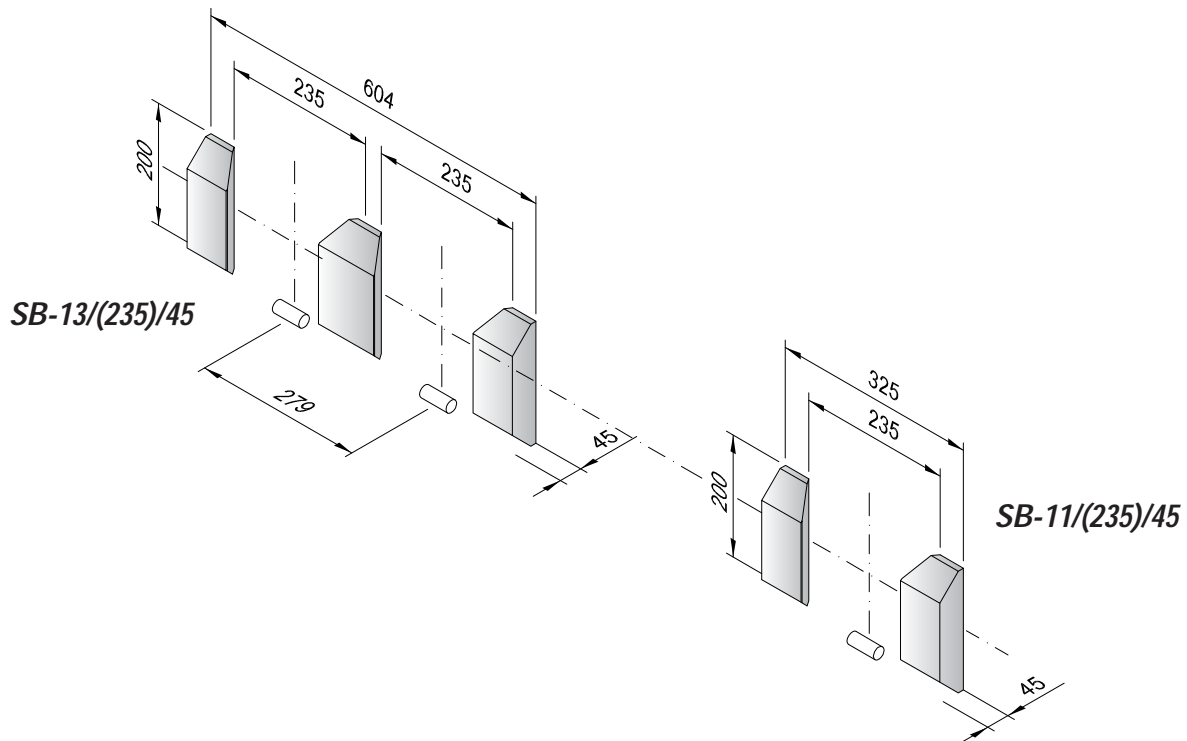


Counter bearings

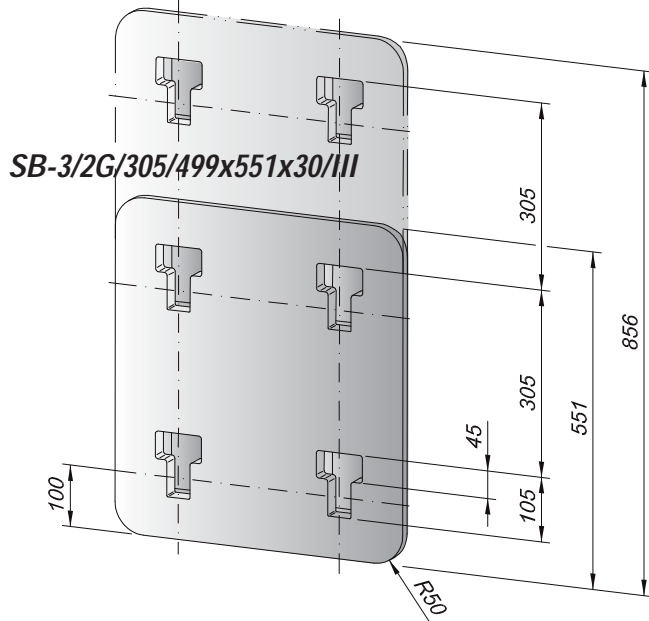


Specification

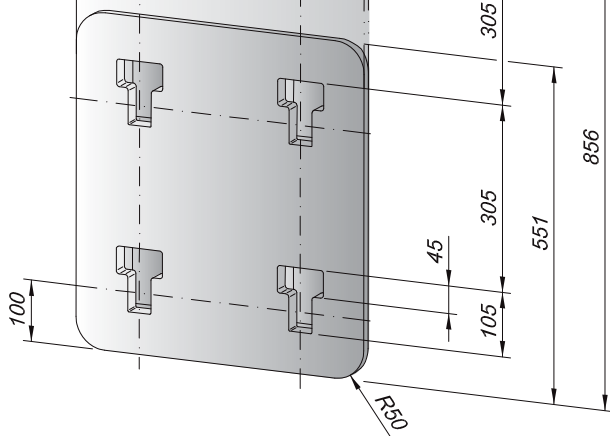
- Min. breaking load tension/compression 850 kN
- Approval from any classification society
- Made of high tensile steel
- Weldable inorganic zinc or epoxy shop primer
- Installation and testing gauge on request
- For high cube container loading several of these counter bearings can be installed on top of each other

Counter bearings

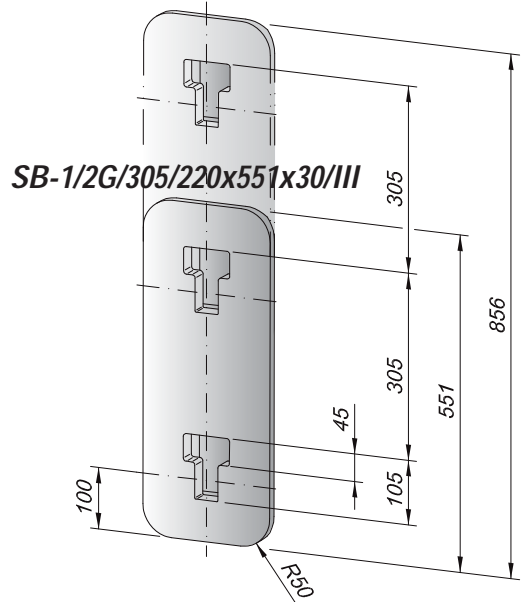
SB-3/3G/305/499x856x30/III



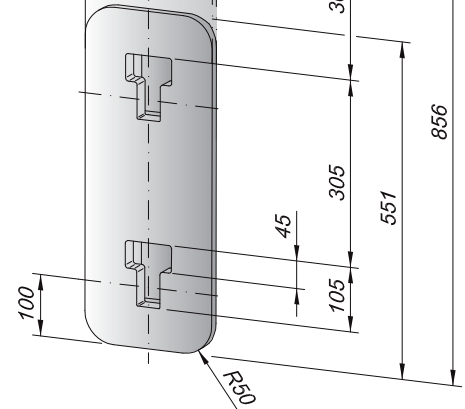
SB-3/2G/305/499x551x30/III



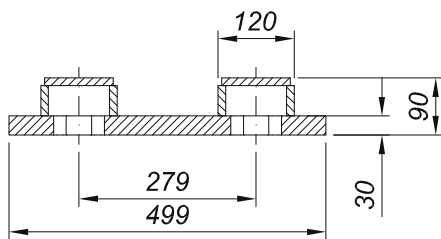
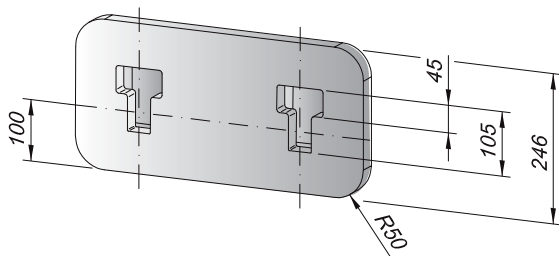
SB-1/3G/305/220x856x30/III



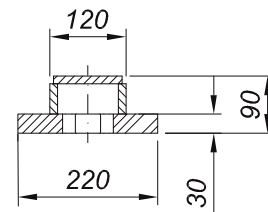
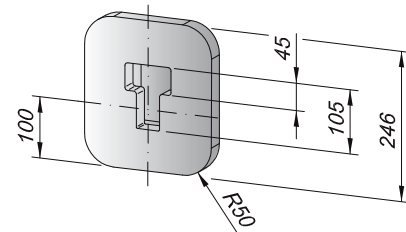
SB-1/2G/305/220x551x30/III



SB-3/G/499x246x30/III



SB-1/G/220x246x30/III

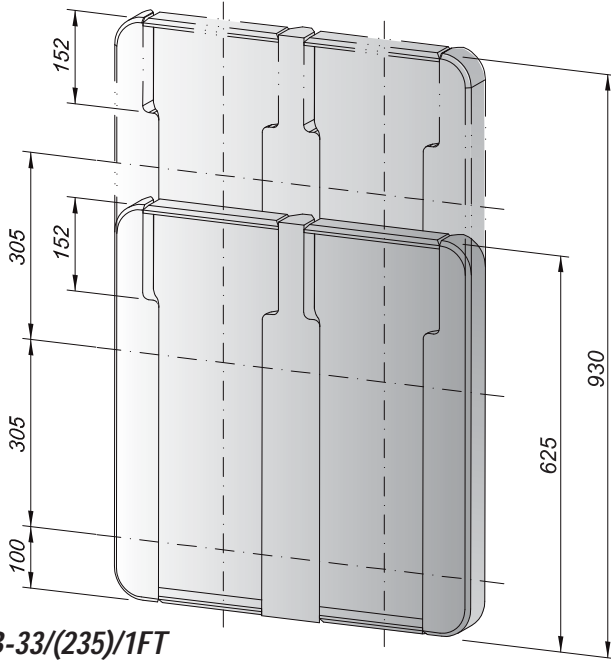


Specification

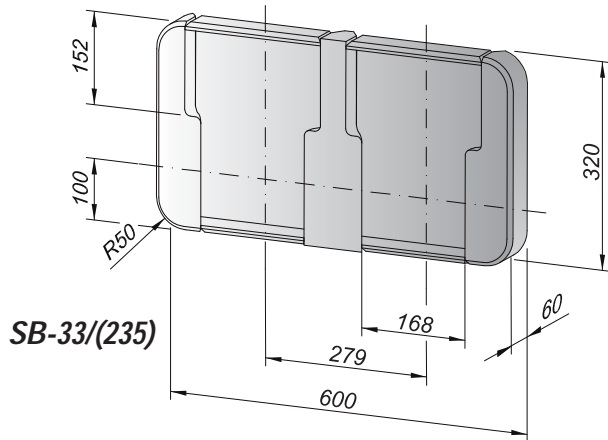
- Min. breaking load tension/compression 850 kN
- Approval from any classification society
- Made of high tensile steel
- Weldable inorganic zinc or epoxy shop primer
- Tightness tested
- All kinds of chamfer preparation on request, please compare to chapter 4.4
- Beveling of topplate (relation 1 to 3) for smooth integration into bulkhead as requested by most classification societies can be offered on request

Counter bearings

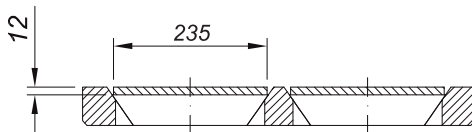
SB-33/(235)/2FT



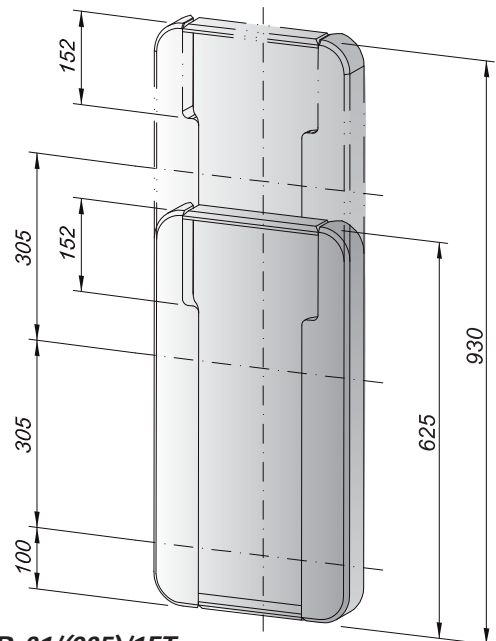
SB-33/(235)/1FT



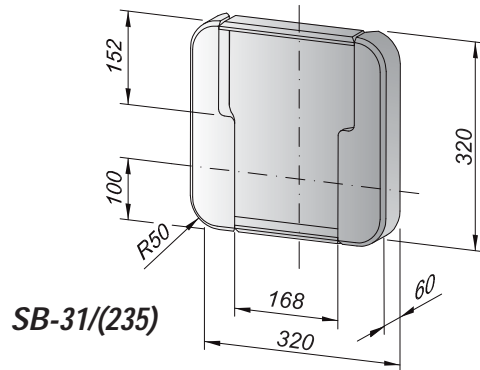
SB-33/(235)



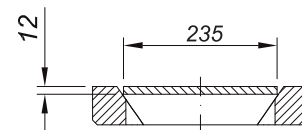
SB-31/(235)/2FT



SB-31/(235)/1FT



SB-31/(235)



Specification

- Min. breaking load tension/compression 1240 kN
- Approval from any classification society
- Made of high tensile steel
- Weldable inorganic zinc or epoxy shop primer
- Tightness tested
- All kinds of chamfer preparation on request, please compare to chapter 4.4