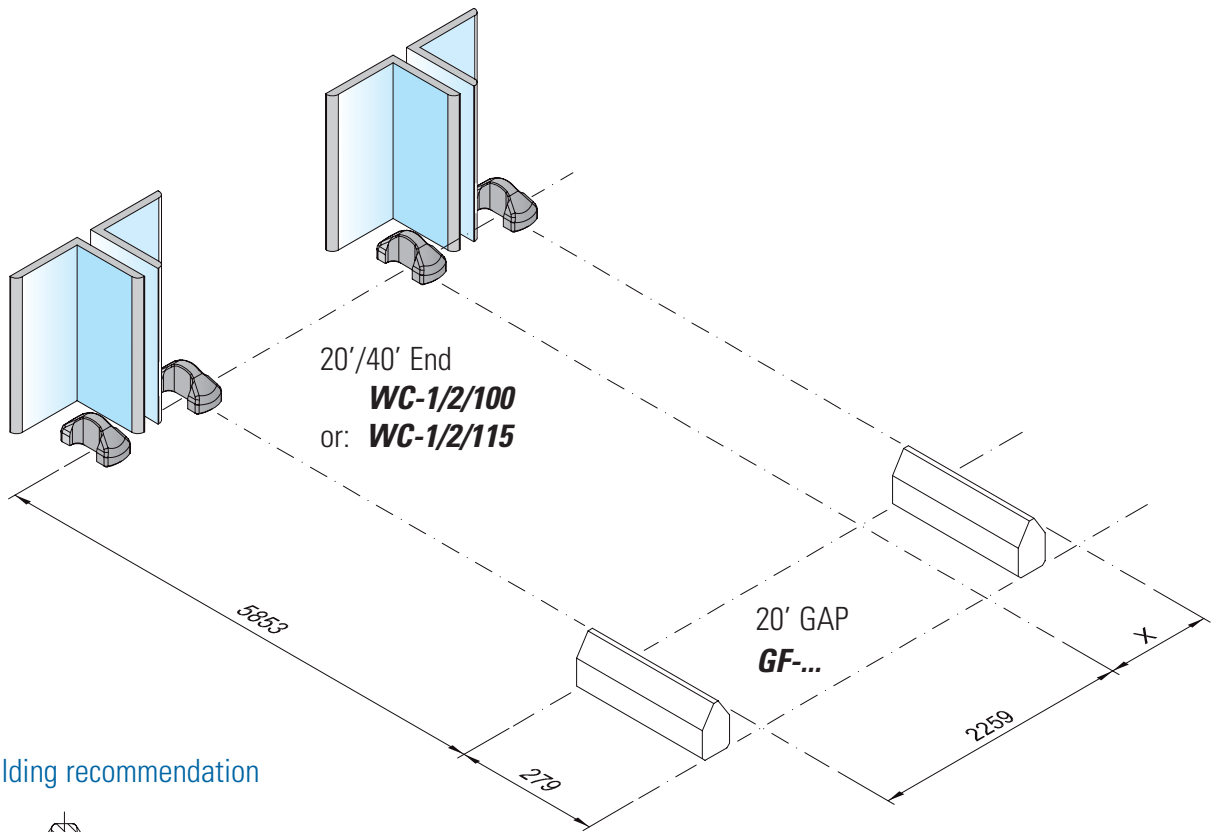
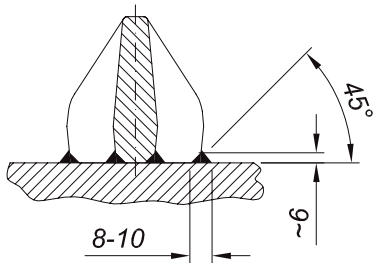


# WELDING CONES

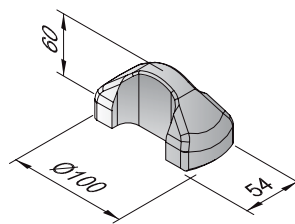


### Welding recommendation

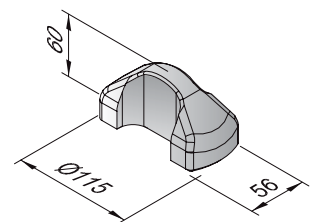


Double bottom or tank step

**WC-1/2/100**



**WC-1/2/115**



## Specification

- Min. breaking load shear 420 kN
- Approval from any classification society
- Drop forged or cast steel execution
- Made of high tensile steel
- Weldable inorganic zinc or epoxy shop primer
- Welding chamfer all around
- Centre marking for easy installation