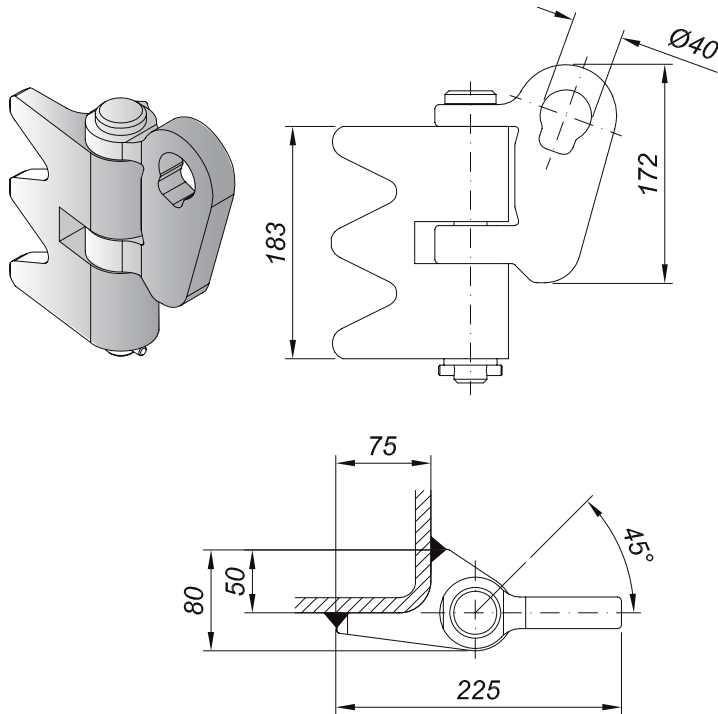
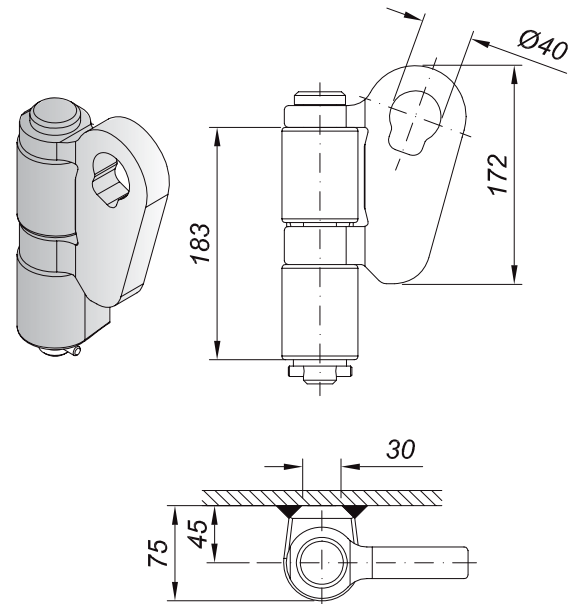


SLEWING EYES

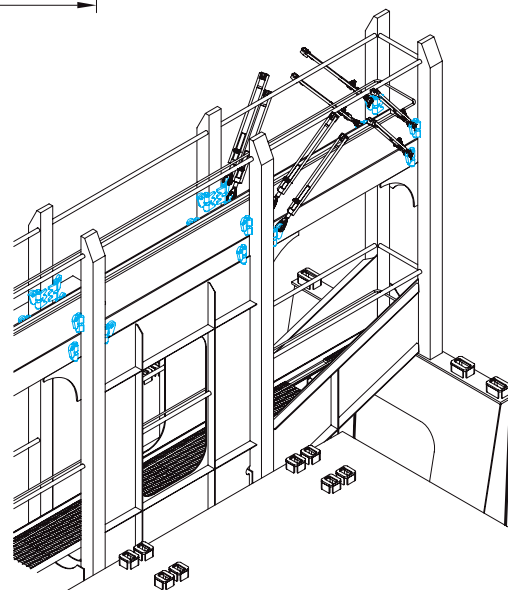
LAP-1S/C25



LAP-1S/F



> Application <



Specification

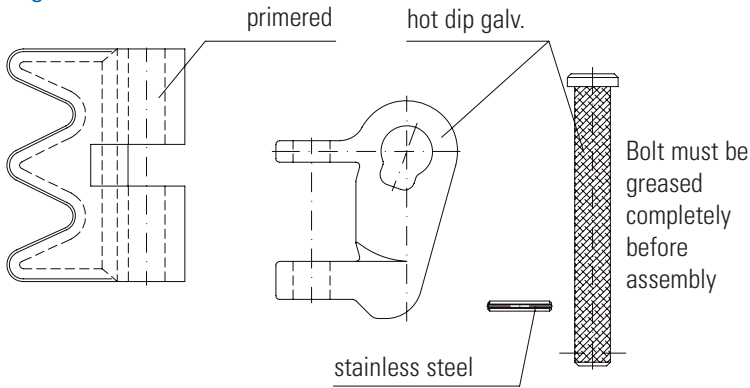
- Min. breaking load 500 kN
- Approval from any classification society
- Welding chamfer
- Drop forged or cast steel execution
- Made of high tensile steel
- Weldable inorganic zinc or epoxy shop primer for welding part
- Movable parts will be delivered in hot dip galvanised execution

SLEWING EYES

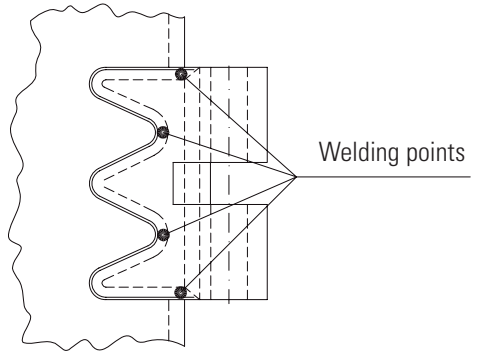
Welding and painting recommendation

LAP-1S/C25

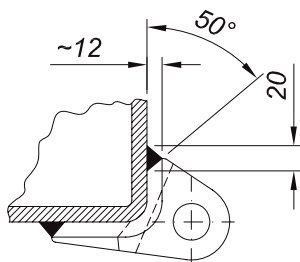
1.) Single Parts



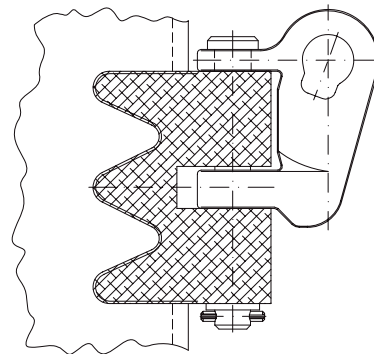
2.) Welding points for fixing



3.) Welding

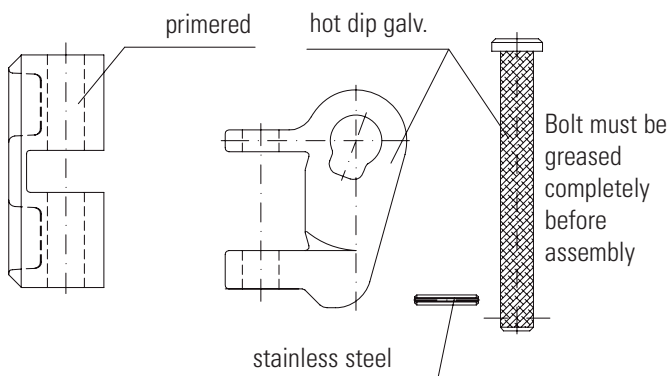


4.) Painting of fixed part and assembly

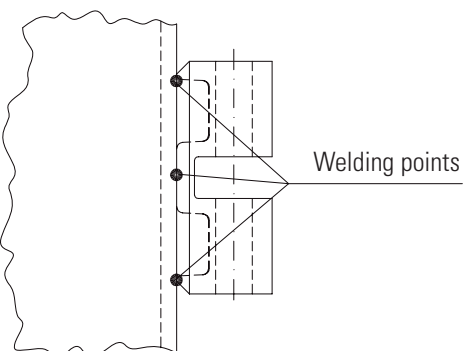


LAP-1S/F

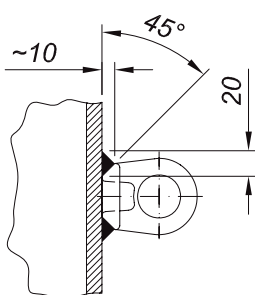
1.) Single Parts



2.) Welding points for fixing



3.) Welding



4.) Painting of fixed part and assembly

