

BOTTOM STACKING CONES



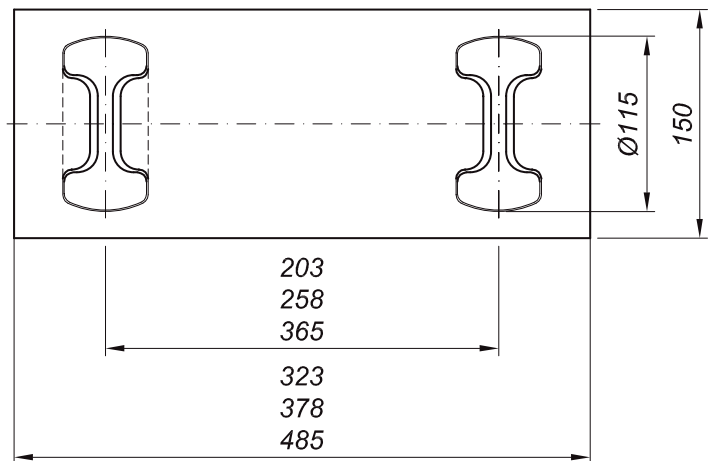
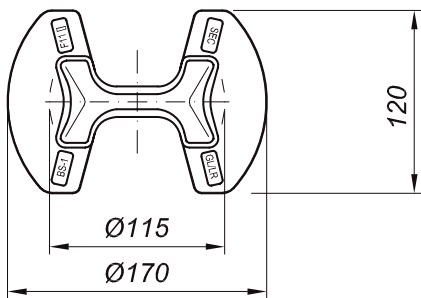
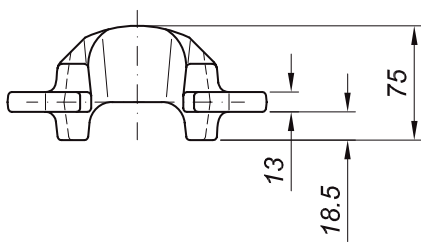
BS-1/115
~ 2.5 kg



CS-2/

203
258
365

/115



Specification

- Min. breaking load shear 420 kN for single stacking cones
- Min. breaking loads tension / compression up to 1200 kN for double stacking cones
- Approval from any classification society
- The transversal distance between the cones of double stackers will be made to measure the required distance between containers. Distances to be used preferably 203, 258 and 365 mm
- To be used in combination with welding plates type WP-1 for example
- Type CS-2/... with one cone flattened to be used for tank step locations
- Drop forged cones
- Enlarged length of cones (115 mm) in order to reduce longitudinal misalignment of containers
- Hot dip galvanised