

Twist stackers



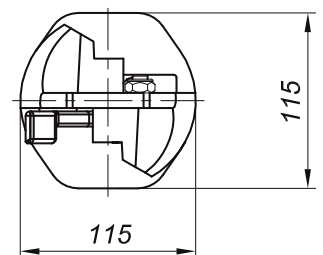
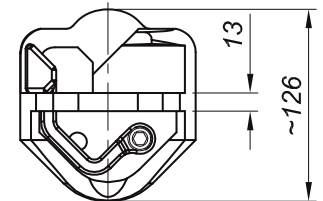
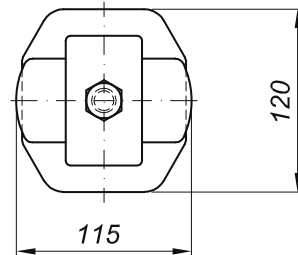
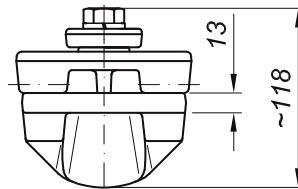
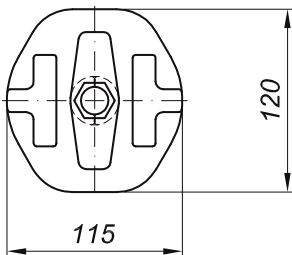
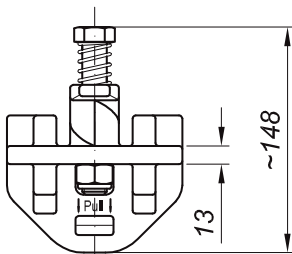
IS-1T/L
~ 2.5 kg



IS-1T
~ 3.6 kg



IS-1T/LG
~ 2.8 kg



Specification

- Min. breaking load shear 420 kN
- Approval from any classification society
- All types are hot dip galvanised with stainless steel components
- Coning and deconing at the quay side as requested by OSHA
- Easy one-hand operation
- Made of casted steel
- A variety of three different twist stackers with 13 mm resting area is available upon customers preference:
- Type IS-1T/L is our standard version in light weight execution with a spring loaded fallout protection
- Type IS-1T is our heavy duty version with closed housing and internal spring mechanism
- Type IS-1T/LG is a pure after sales product with gravity whip as fallout protection.