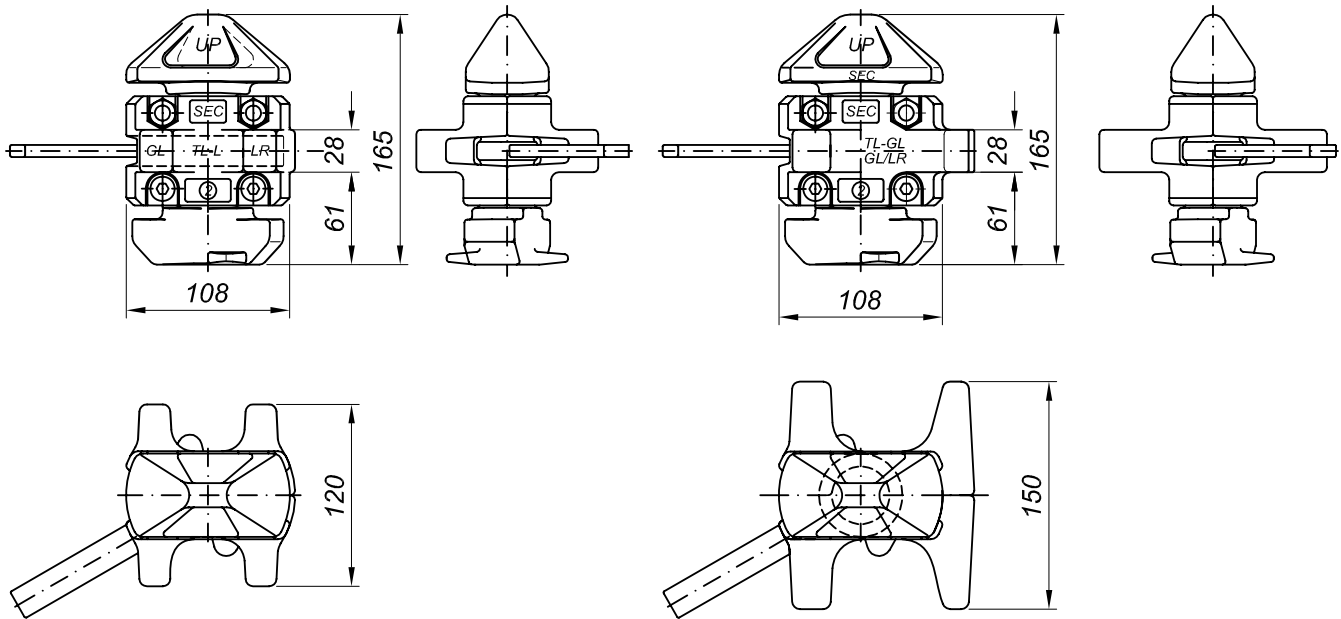


CONVENTIONAL TWISTLOCKS

TL-L
~ 5.5 kg



TL-GL/L
~ 5.9 kg

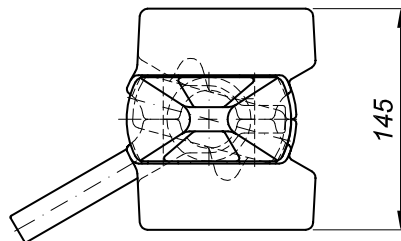
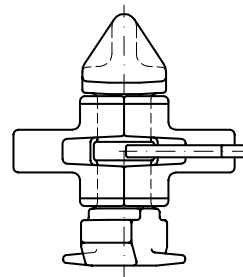
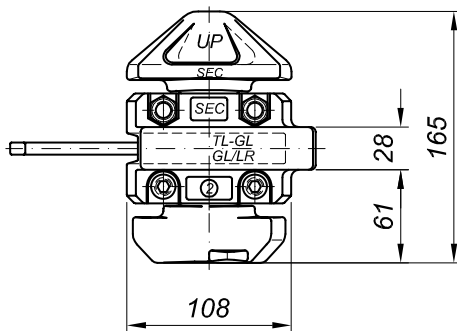


Specification

- Min. breaking loads tension 500 kN / shear 420 kN
- Approval from any classification society
- Pre-locking function of lower cone
- Left hand locking as standard, right hand locking on request
- Type TL-GL/L with large resting area according GL rules for highest pressure forces
- Hot dip galvanised
- Internal locking mechanism made of stainless steel components

CONVENTIONAL TWISTLOCKS

TL-GL/L
~ 6.6 kg



Specification

- Min. breaking loads tension 500 kN / shear 420 kN
- Approval from any classification society
- Maximum resting area exceeding class requirements by far
- Designed for highest pressure forces and reduction of wear down or slip/stick effect in combination with elongated ISO-sockets
- To be used preferably at bottom tier
- Pre-locking function of lower cone
- Left hand locking as standard, right hand locking on request
- Hot dip galvanised
- Internal locking mechanism made of stainless steel components