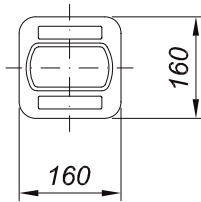
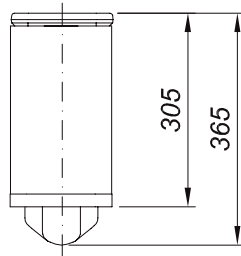
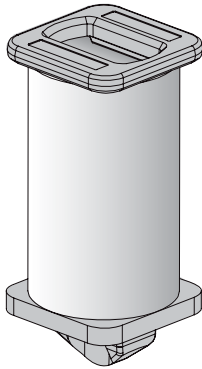


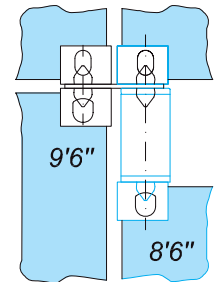
HEIGHT ADAPTERS

CP-1/TC/305

~ 19.4 kg

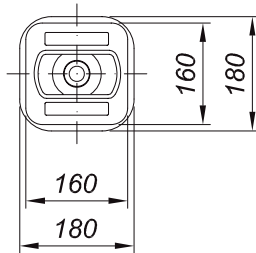
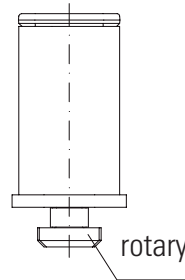
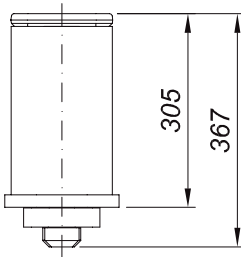
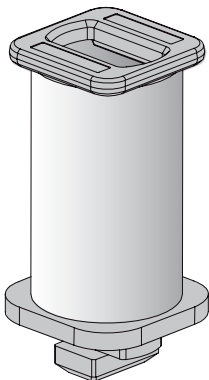


> Application <

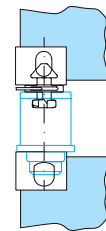


CP-1/LT/305

~ 23.9 kg



> Application <



Compensation pieces or height adapters to be used preferably in holds for levelling of adjacent stacks.

Specification

- When applied in combination with twistlocks compensation piece type CP-1/LT/305 is capable to transmit lifting forces up to 400 kN breaking load
- Approval from any classification society
- Made of high tensile steel
- Standard height is one feet (305 mm) but other heights can be delivered on request