

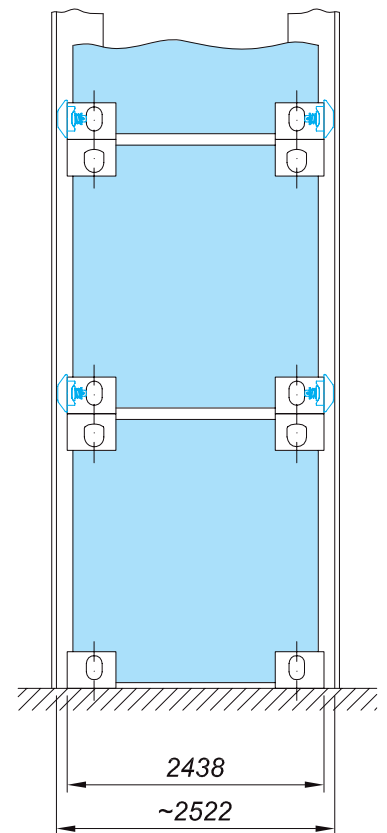
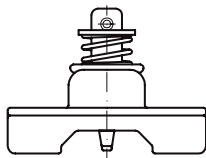
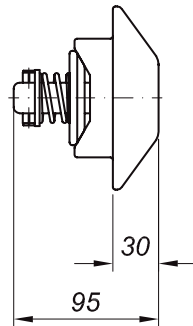
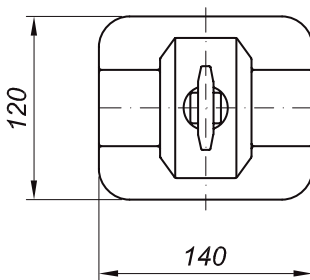
ISO / EURO-ADAPTER PIECES



DA-CG/30
~ 3.2 kg



> Application <



Specification

- Adapter pieces for safe loading of ISO-containers within guide angles with increased width suitable for loading of EURO-containers (2500 mm)
- Coning and deconing to be performed on the quayside as requested by OSHA
- Only the lower corners of an ISO-container have to be equipped with adapter pieces. In total four pieces of DA-CG/30 are needed per 40' ISO-container.
- Made of cast steel
- Hot dip galvanised with stainless steel components