

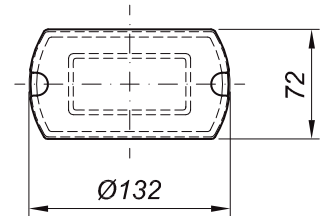
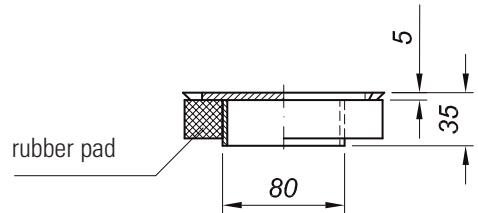
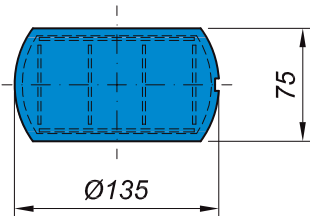
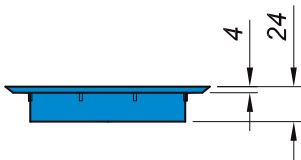
# ISO-PLUGS



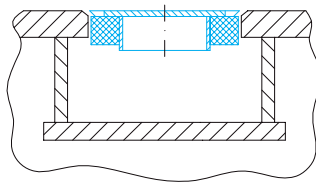
**IP-P**  
~ 0.05 kg



**IP-SR**  
~ 0.45 kg



> Application <



## Specification

- As a protection against dirt or when loading grain flush type twistlock pockets can be closed by use of plugs
- Our standard solution is a low cost plastic plug type IP-P
- The luxury version is a metal plug type IP-SR which is hot dip galvanised with rubber sealing
- Also solid rubber version is available