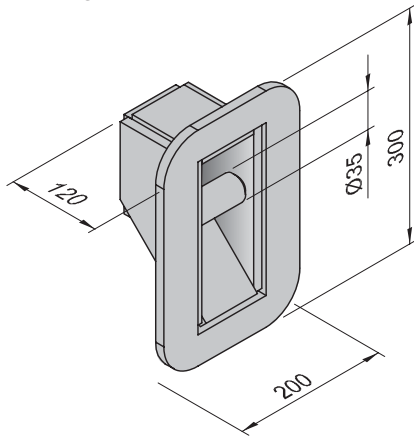


SECURING POINTS FOR GENERAL CARGO

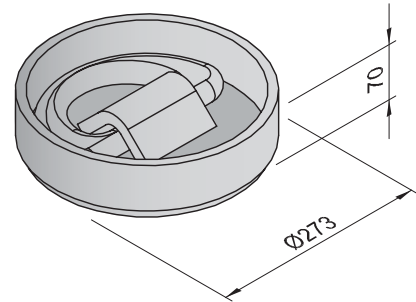
LP-B-1H/BL12/200x300x12/III

Min. breaking load 120 kN



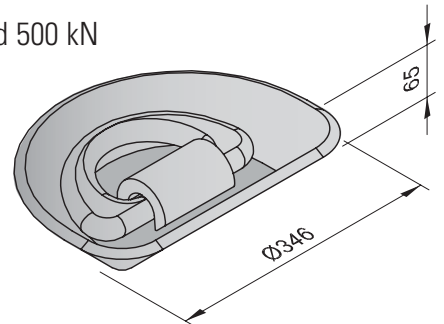
DR-1F

Min. breaking load 500 kN



DR-1F/50/IV

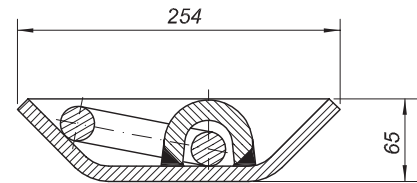
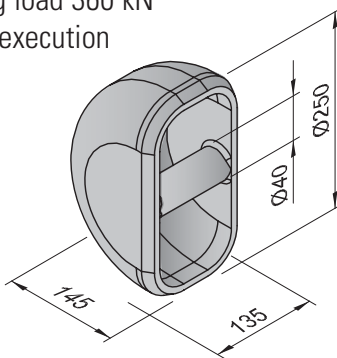
Min. breaking load 500 kN



LP-B-C1H/BL36/II

Min. breaking load 360 kN

Casted steel execution

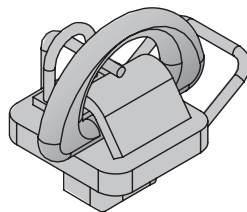


DR-L/45

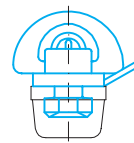
Min. breaking load 450 kN

Hot dip galvanized

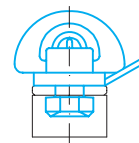
~ 12.2 kg



> Application <



FF-...



SF-...

Specification

- Approval from any classification society
- Made of high tensile steel
- Weldable inorganic zinc or epoxy shop primer
- Preparation of welding chamfer for fixed securing points on request